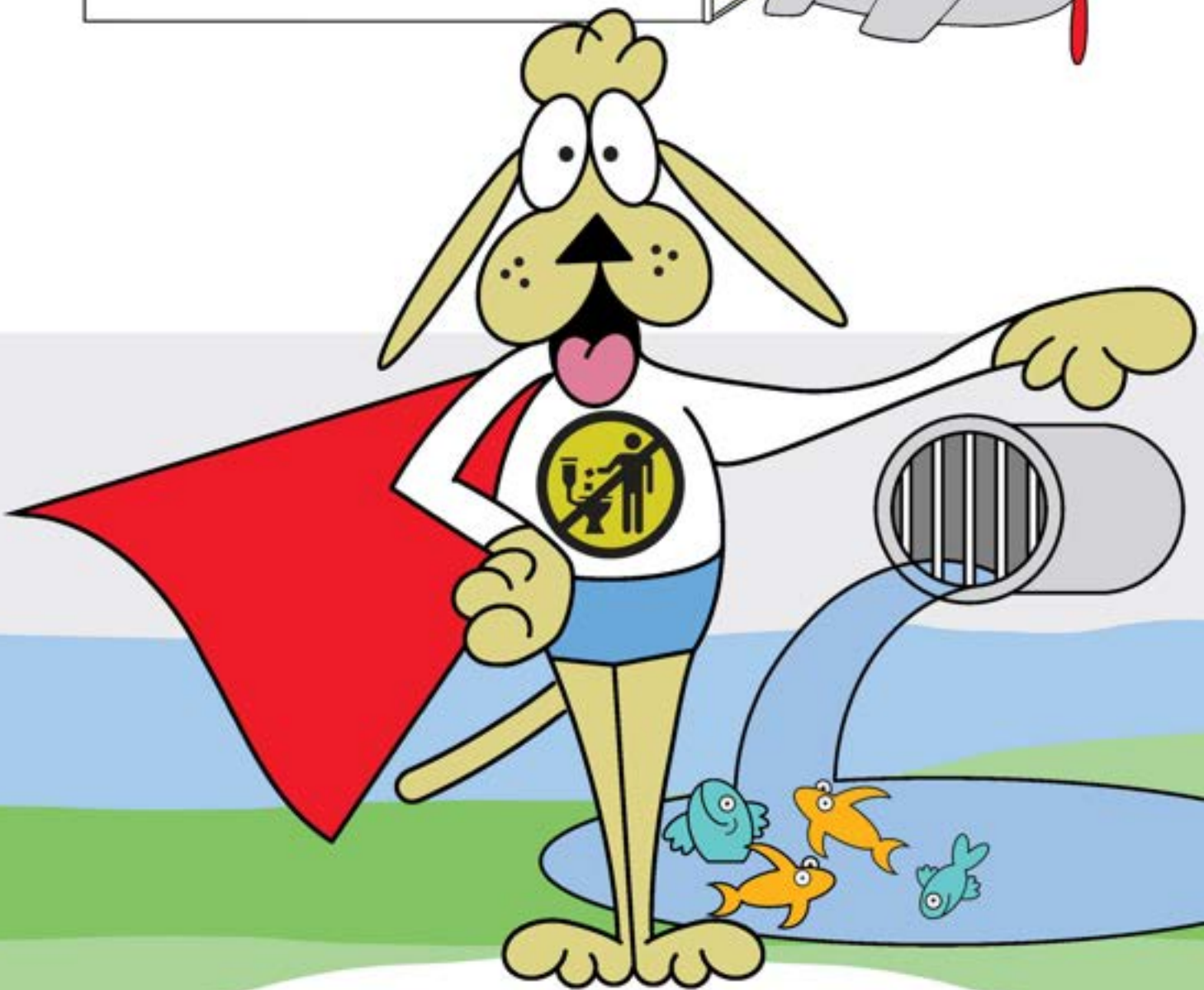
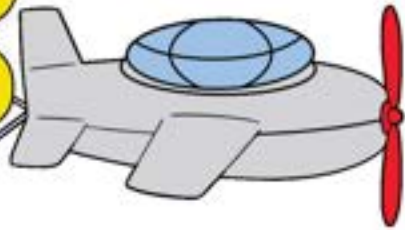


Apollo: A Clog-Fighting Dog

HELP SAVE OUR WATERS!





Meet the real Artemis and Apollo

What can we flush?

NO!

NO!

NO!

NO!

YES!

Don't feed the Clog Monster!

Name: _____

Draw a line to "toss" objects where along.

When you use the toilet, flush!

visit: <https://flushsmart.org/enrichment-materials/>
to download our collection of activity pages!

Apollo is a good dog.
He follows the rules and
protects the house.

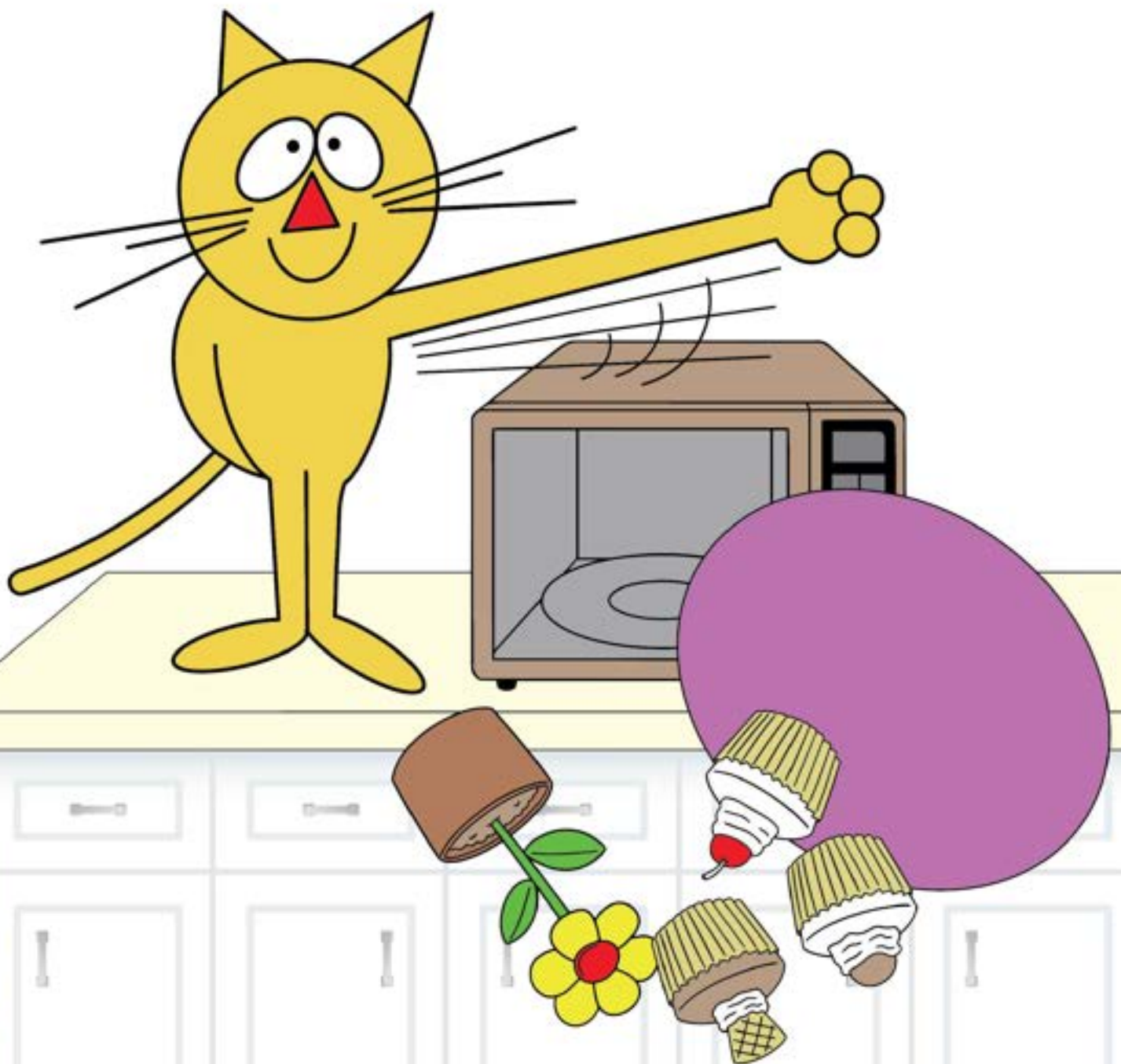






Artemis is a naughty cat.
She does NOT follow the
rules and does NOT
protect the house.

Artemis likes to play tricks.
She has quick paws and a
strong tail. She uses them
to knock things off the
kitchen counter...



**Oh,
No!**



... and the bathroom shelf.





CRASH!

splash!



STOP!
Those do **NOT**
belong in the
toilet!"



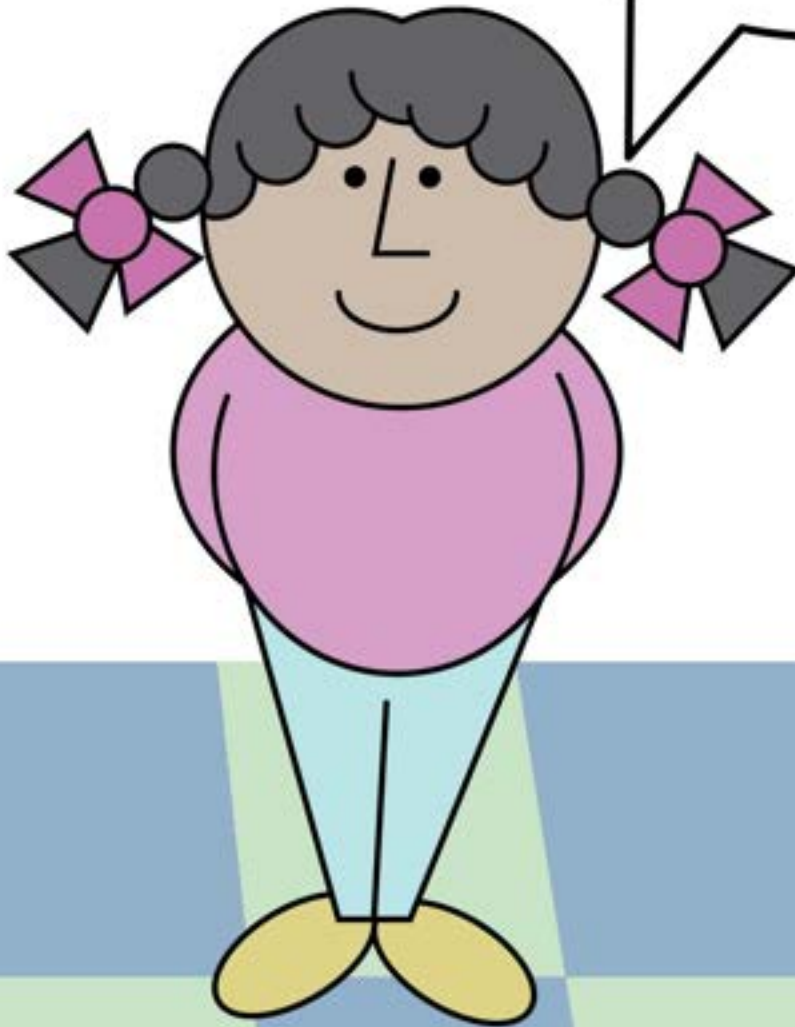
**DO NOT
FLUSH
wipes with
this sign!**





DO NOT FLUSH

If you don't follow the rules, do you know who will come?

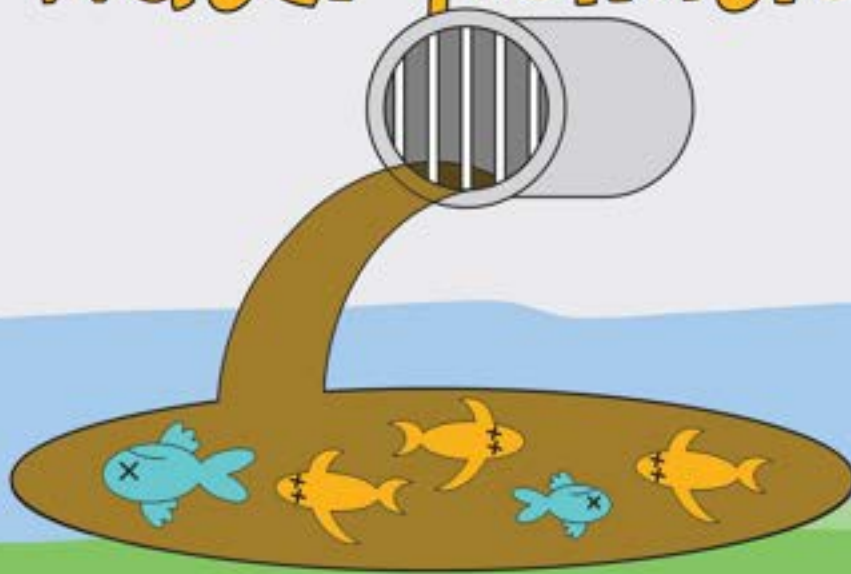




The Clog Monster!



Clogs break
toilets and cause
water pollution.



Don't feed the
Clog Monster!



DO NOT FLUSH

If you see this **Do Not Flush** symbol on wipes, do not flush them in the toilet!

