





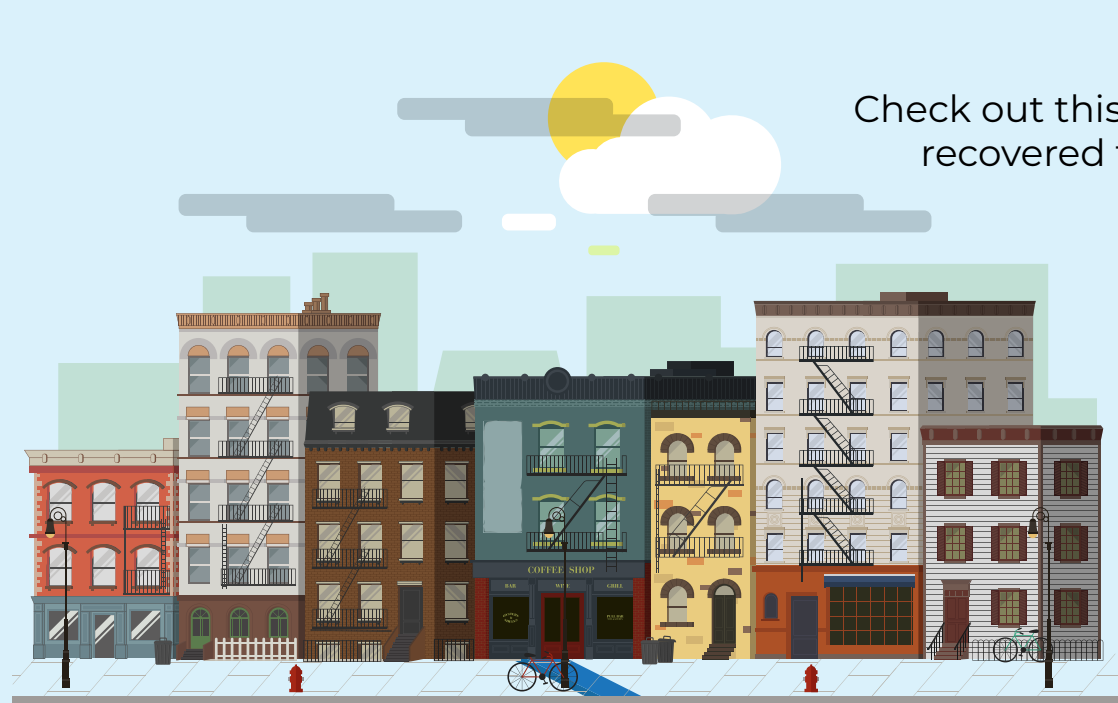


What's forming under the streets of New York City?

Who	What	Where	When
 The Fuss & O'Neill Engineers, Inc.	 a 5-gallon sample collected	 Ward's Island Wastewater Treatment Facility; Bronx & Manhattan	 February 17, 2016

Here's what two collection studies from screens at wastewater treatment facilities for Manhattan and the Bronx found.

Check out this breakdown of all the items recovered from the screen sample

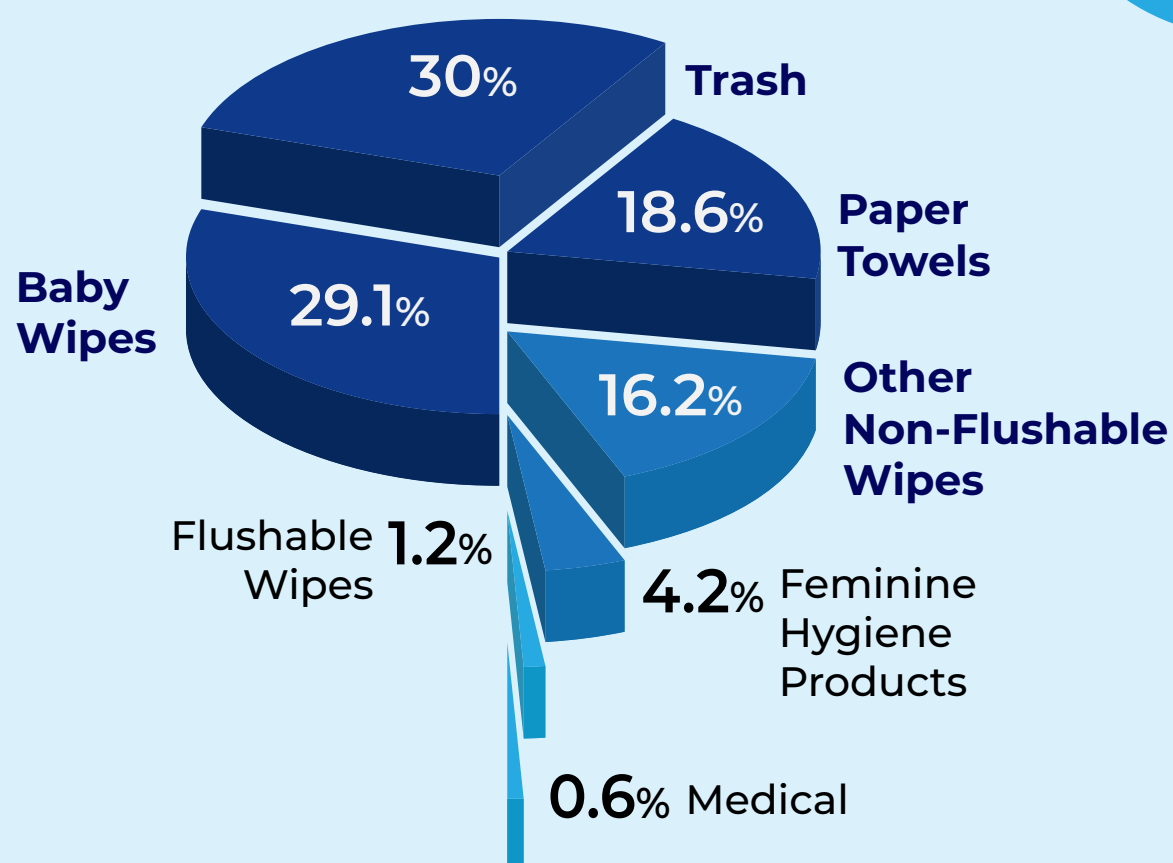


The Bronx

All Materials recovered
Wards Island - Bronx Sort

The Top Offenders

These 3 items made up 77% of the sample.

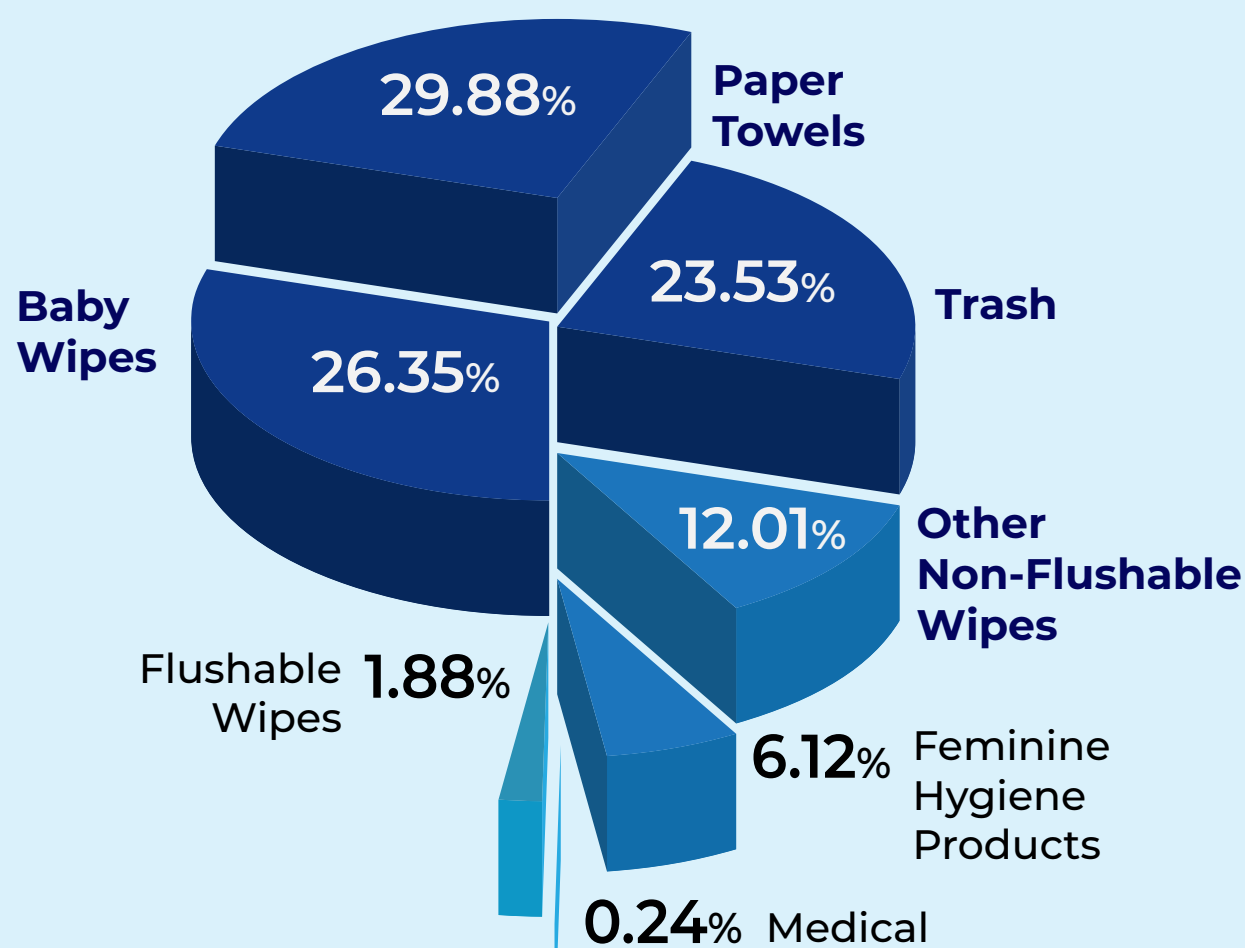


Manhattan

All Materials recovered
Wards Island - Manhattan Sort

The Top Offenders

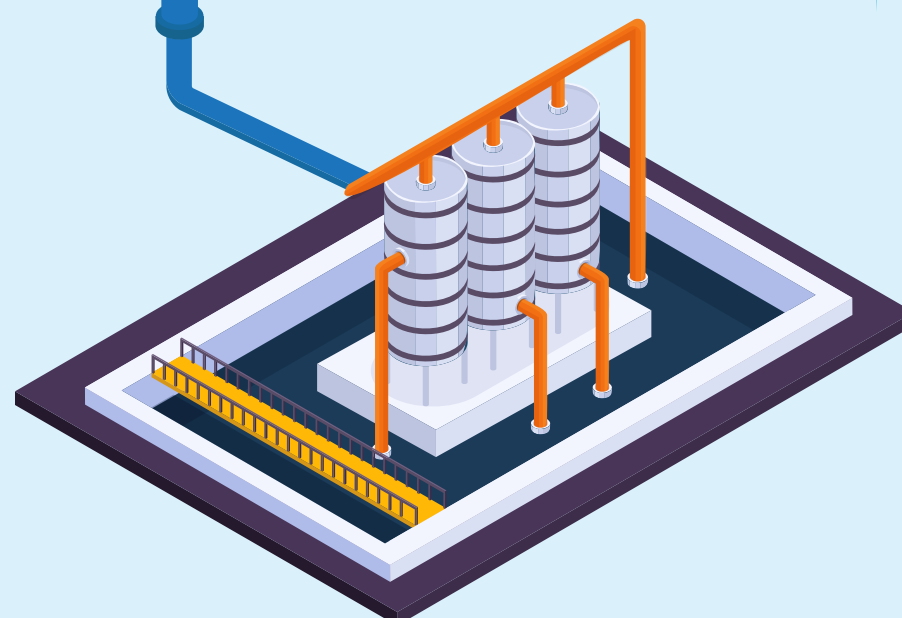
These 3 items made up 80% of the sample.



98-99%

of sewer backups and treatment facility clogs are caused by non-flushable items.

It's important to recognize what kind of wipes are causing clogs such as non-flushable baby and cleaning wipes vs. flushable toilet wipes.



If you see this symbol on wipes,

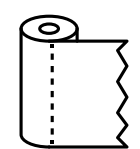


Do Not Flush!!



Don't feed the Clog Monster!!

Follow the guide below, and remember, **when in doubt, throw it out!**



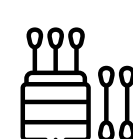
Paper towels



Baby wipes



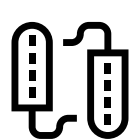
Disinfecting and cleaning wipes



Cotton swabs



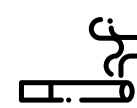
Dental floss



Feminine products (pads & tampons)



Facial tissue



Cigarettes and cigarette butts



Makeup applicator pads & removal wipes

Are you **#FlushSmart**? Find out by visiting the Responsible Flushing Alliance. www.flushsmart.org

